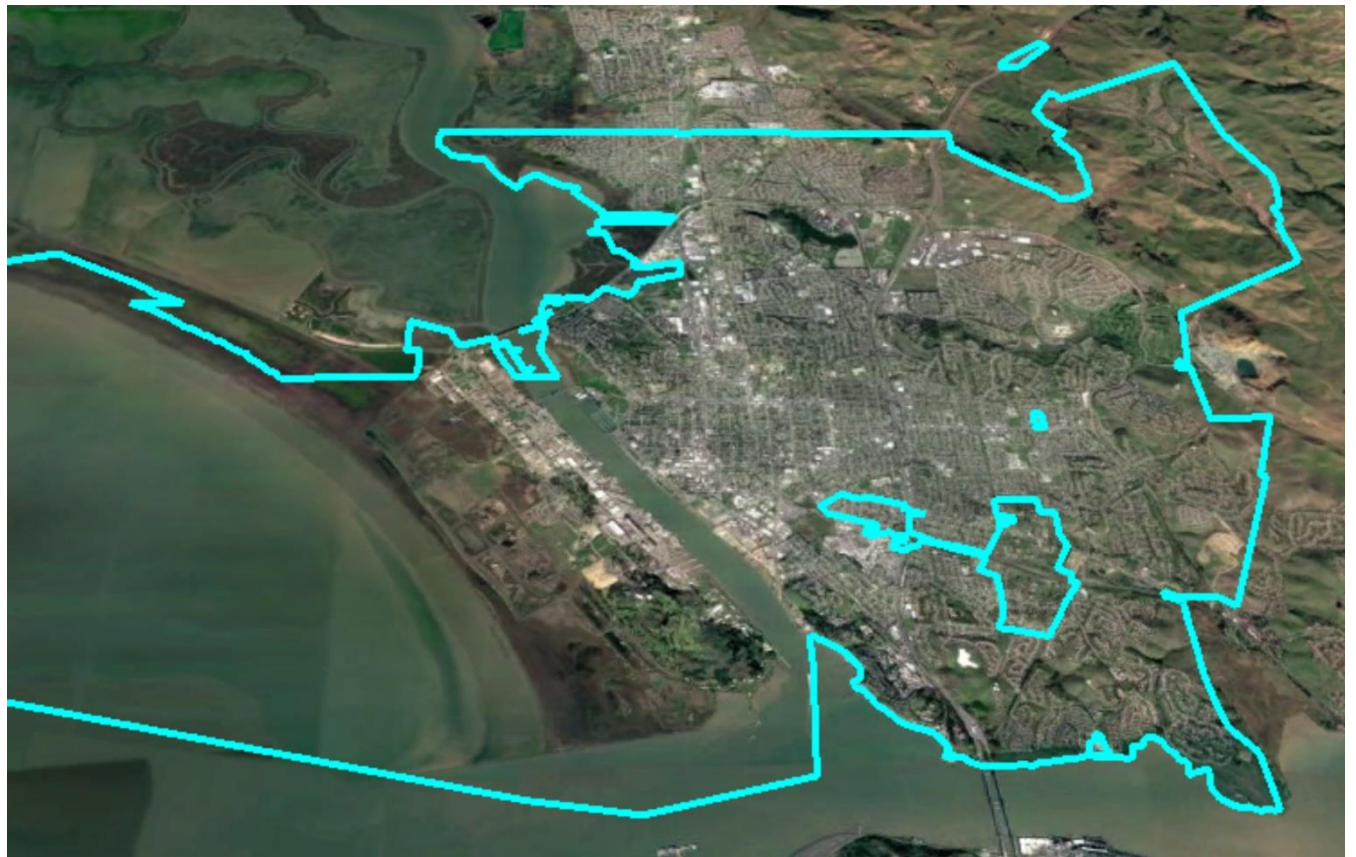




CITY OF VALLEJO
SPECIAL CITY COUNCIL
MEETING:
ACTION ITEM A



City of Vallejo Districting Criteria and Process

December 19,
2018

1. **“At Large”**
2. **“From District” or “Residence” Districts**
3. **“By District”**

The California Voting Rights Act was written to specifically require by-district elections.

California Voting Rights Act (CVRA)

3

- Under the Federal Voting Rights Act (passed in 1965), a jurisdiction must fail 4 factual tests before it is in violation of the law.
- The California VRA makes it significantly easier for plaintiffs to force jurisdictions into “by-district” election systems by eliminating two of the US Supreme Court *Gingles* tests:
 - ~~1. Can the protected class constitute the majority of a district?~~
 2. Does the protected class vote as a bloc?
 3. Do the voters who are not in the protected class vote in a bloc to defeat the preferred candidates of the protected class?
 - ~~4. Do the “totality of circumstances” indicate race is a factor in elections?~~
- Liability is now determined only by the presence of racially polarized voting

- Switched (or in the process of switching) as a result of CVRA:
 - At least 165 school districts
 - 28 Community College Districts
 - 100+ cities
 - 1 County Board of Supervisors
 - 10 water and other special districts.
- Cases So Far:
 - Palmdale, Santa Clara and Santa Monica went to trial on the merits. Palmdale, Santa Clara, and Santa Monica lost. Santa Monica will appeal.
 - Modesto and Palmdale each spent about \$1.8 million on their defense (in addition to the attorney fee awards in those cases). Santa Monica has spent an estimated \$5 million so far.
- Key settlements:
 - Palmdale: \$4.7 million
 - Modesto: \$3 million
 - Highland: \$1.3 million
 - Anaheim: \$1.1 million
 - Whittier: \$1 million
 - Santa Barbara: \$600,000
 - Tulare Hospital: \$500,000
 - Madera Unified: about \$170,000
 - Hanford Joint Union Schools: \$118,000
 - Merced City: \$42,000
- An estimated \$16 million in total settlements and court awards so far.

Districting Process

5

Step	Description
Nov. 8	Community Forum held.
Two Initial Hearings: Nov. 27 and Dec. 19	Held prior to release of draft maps. Education and to solicit input on the communities in the District.
Release draft maps	Maps must be posted at least 7 days prior to 3 rd hearing.
Jan. 5	Community Forum
Two hearings on draft maps: Jan. 22 and Feb. 26	Two meetings to discuss and revise the draft maps and to discuss the election sequence.
Map adoption: March 26 and April 9	Map adopted via ordinance. Final map must be posted at least 7 days prior to adoption.

Federal Laws

- ❑ Equal Population
- ❑ Federal Voting Rights Act
- ❑ No Racial Gerrymandering



Traditional Criteria

- ❑ Communities of interest
- ❑ Compact
- ❑ Contiguous
- ❑ Visible (Natural & man-made) boundaries
- ❑ Respect for voters' wishes and continuity in office
- ❑ *Planned future growth*

Demographic Summary

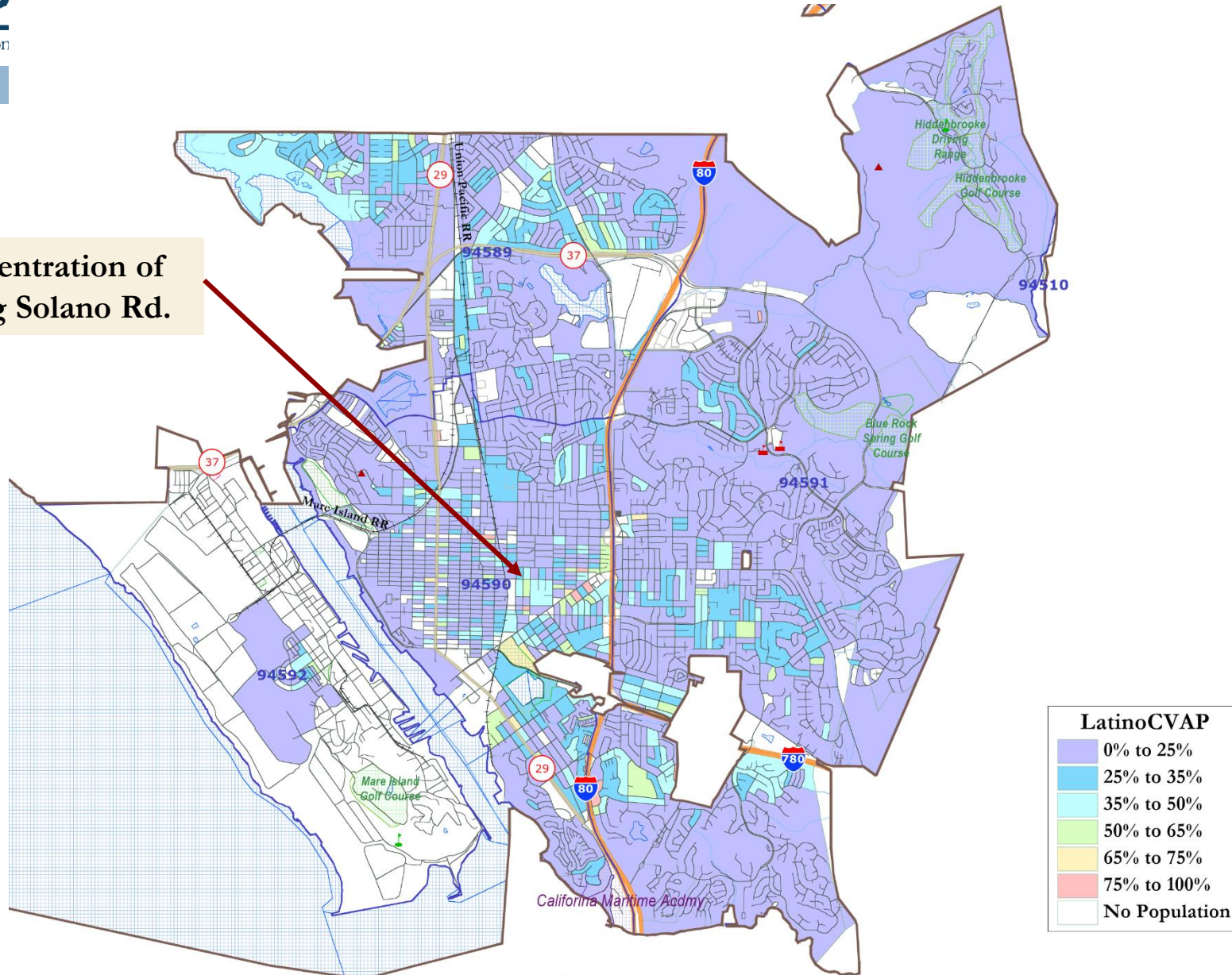
Each of six Council districts will need about 19,324 residents.

All of these data categories can be mapped.

Category	Field	Count	Pct	Category	Field	Count	Pct
Total Pop	Total Pop	115,942		ACS Pop. Est.	Total	119,653	
	Hisp	26,165	23%	Age	age0-19	27,759	23%
	NH White	28,946	25%		age20-60	66,499	56%
	NH Black	25,937	22%		age60plus	25,395	21%
Citizen Voting Age Pop	Asian-American	29,887	26%	Immigration	immigrants	32,467	27%
	Total	82,805			naturalized	19,837	61%
	Hisp	13,960	17%	Language spoken at home	english	70,722	63%
	NH White	26,542	32%		spanish	19,760	18%
NH Black	19,436	23%	asian-lang		18,634	17%	
Voter Registration (Nov 2016)	Asian/Pac.Isl.	20,249	26%		other lang	2,956	3%
	Total	62,899		Language Fluency	Speaks Eng. "Less than Very Well"	15,649	14%
	Latino est.	14,669	23%	Education (among those age 25+)	hs-grad	52,008	63%
	Spanish-Surnamed	13,178	21%		bachelor	14,948	18%
	Asian-Surnamed	1,742	3%		graduatedegree	5,122	6%
	Filipino-Surnamed	5,070	8%	Child in Household	child-under18	11,486	28%
NH White est.	23,682	38%	Pct of Pop. Age 16+	employed	53,750	55%	
NH Black	17,362	28%	Household Income	income 0-25k	9,130	22%	
Total	43,912			income 25-50k	8,779	21%	
Latino est.	9,986	23%		income 50-75k	7,278	18%	
Spanish-Surnamed	8,970	20%		income 75-200k	14,810	36%	
Asian-Surnamed	1,189	3%		income 200k-plus	1,583	4%	
Voter Turnout (Nov 2016)	Asian-Surnamed	3,441	8%	Housing Stats	single family	33,348	73%
	Filipino-Surnamed	3,441	8%		multi-family	12,323	27%
	NH White est.	16,933	39%		rented	18,842	45%
	NH Black	12,098	28%		owned	22,738	55%
	Total	21,725					
	Latino est.	3,655	17%				
Voter Turnout (Nov 2014)	Spanish-Surnamed	3,283	15%				
	Asian-Surnamed	455	2%				
	Filipino-Surnamed	1,603	7%				
	NH White est.	9,685	45%				
	NH Black est.	6,380	29%				

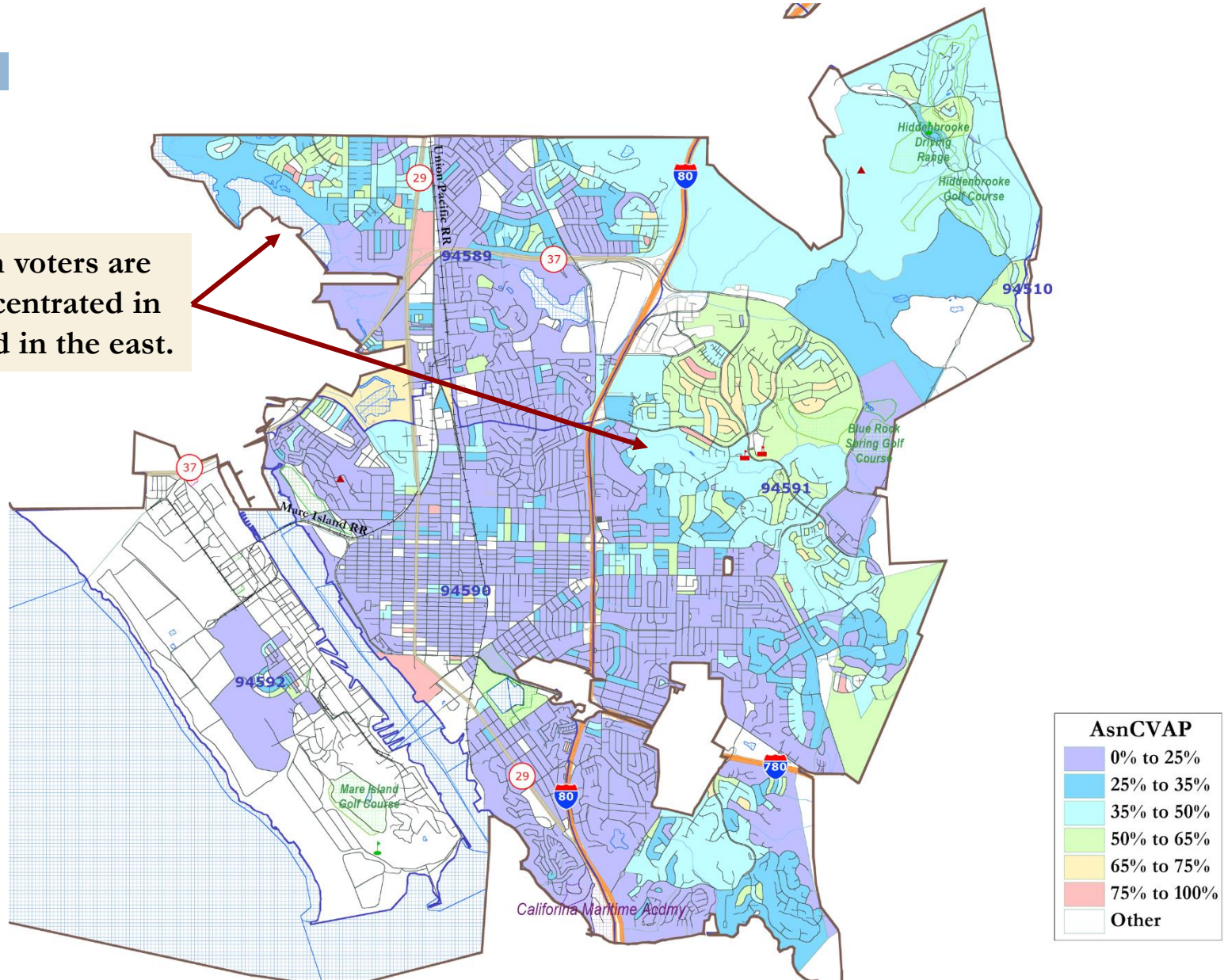
Latino CVAP

The main concentration of Latinos is along Solano Rd.



Asian CVAP

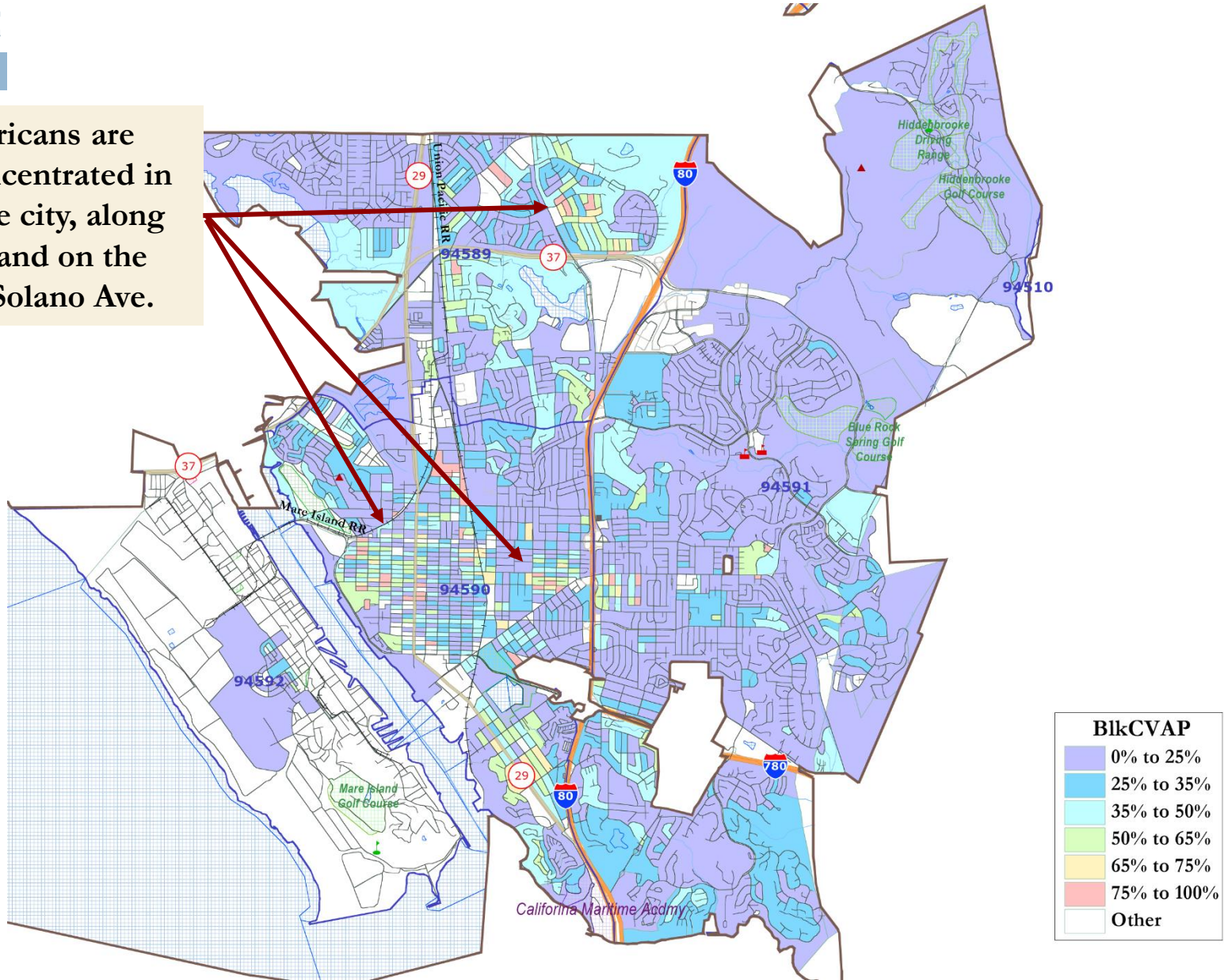
Asian-American voters are particularly concentrated in the northwest and in the east.



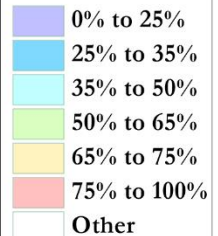
African-American CVAP

10

African-Americans are particularly concentrated in the north of the city, along Sonoma Ave, and on the north side of Solano Ave.

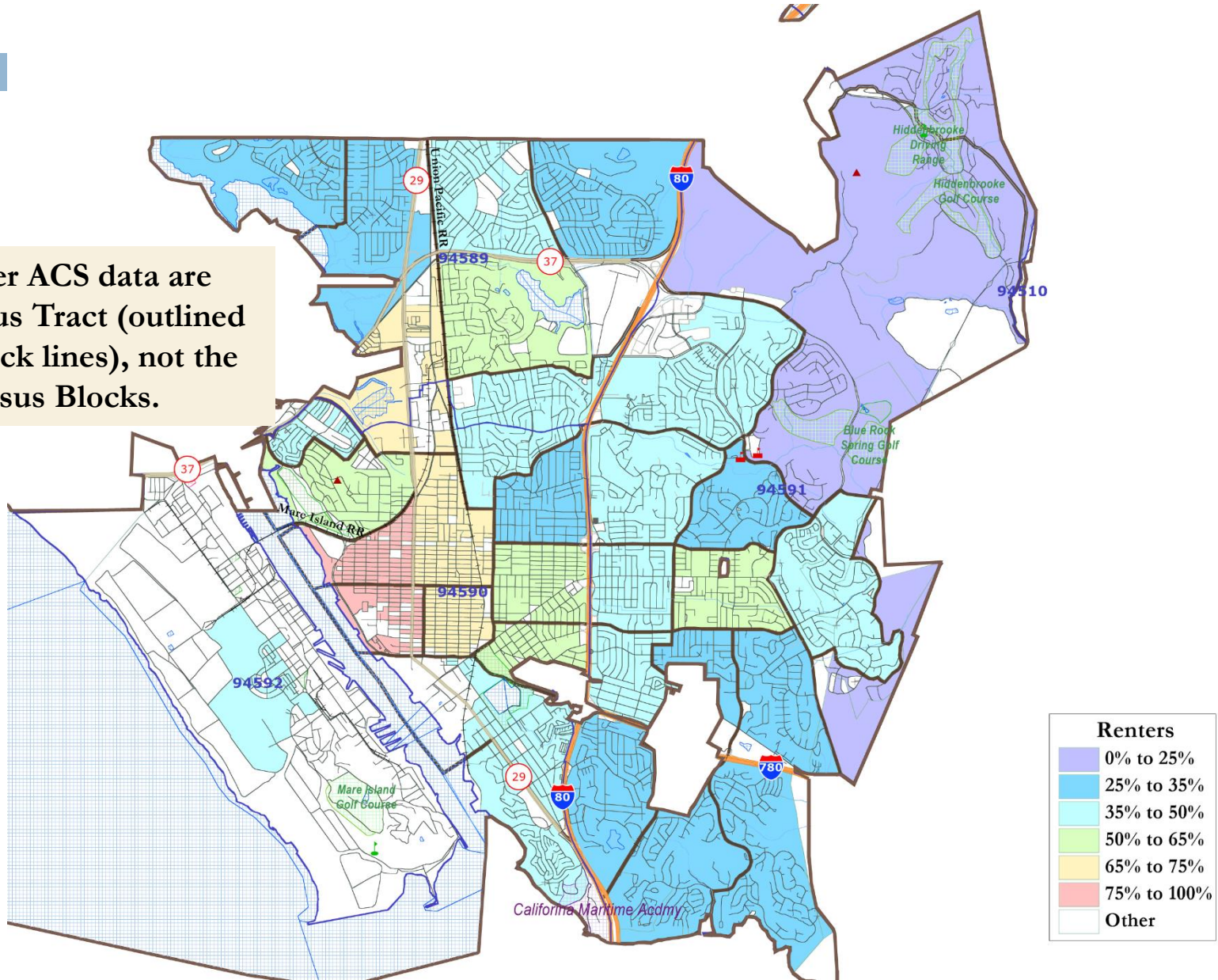


BlkCVAP



Percent Renters

Renter and other ACS data are available by Census Tract (outlined by the thicker black lines), not the smaller Census Blocks.



Defining Communities of Interest

12

1st Question: what is your neighborhood or community of interest?

A Community of Interest is generally defined as a neighborhood or community of shared interests, views, problems, or characteristics.

Possible community feature/boundary definitions include:

- ❑ School attendance areas
- ❑ Natural neighborhood dividing lines, such as highway or major roads, rivers, canals, and/or hills
- ❑ Areas around parks and other neighborhood landmarks
- ❑ Common issues, neighborhood activities, or legislative/election concerns
- ❑ Shared demographic characteristics
 - ▣ Such as similar levels of income, education, or linguistic isolation

2nd Question: Does a Community of Interest want to be united in one district, or to be divided to have a voice in multiple elections?

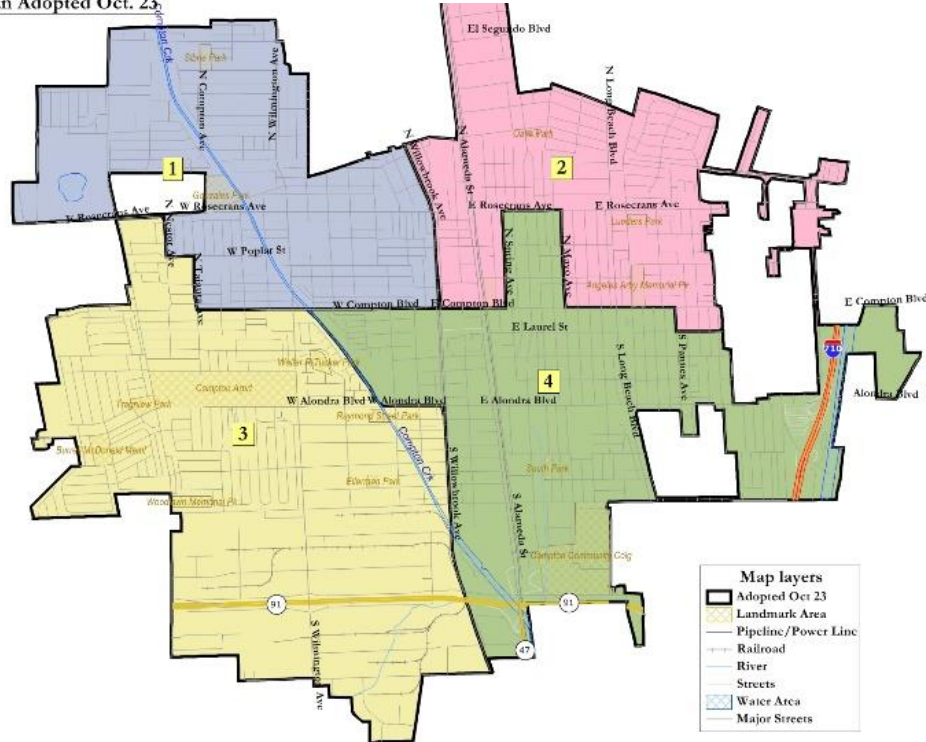


Sample Compact Maps

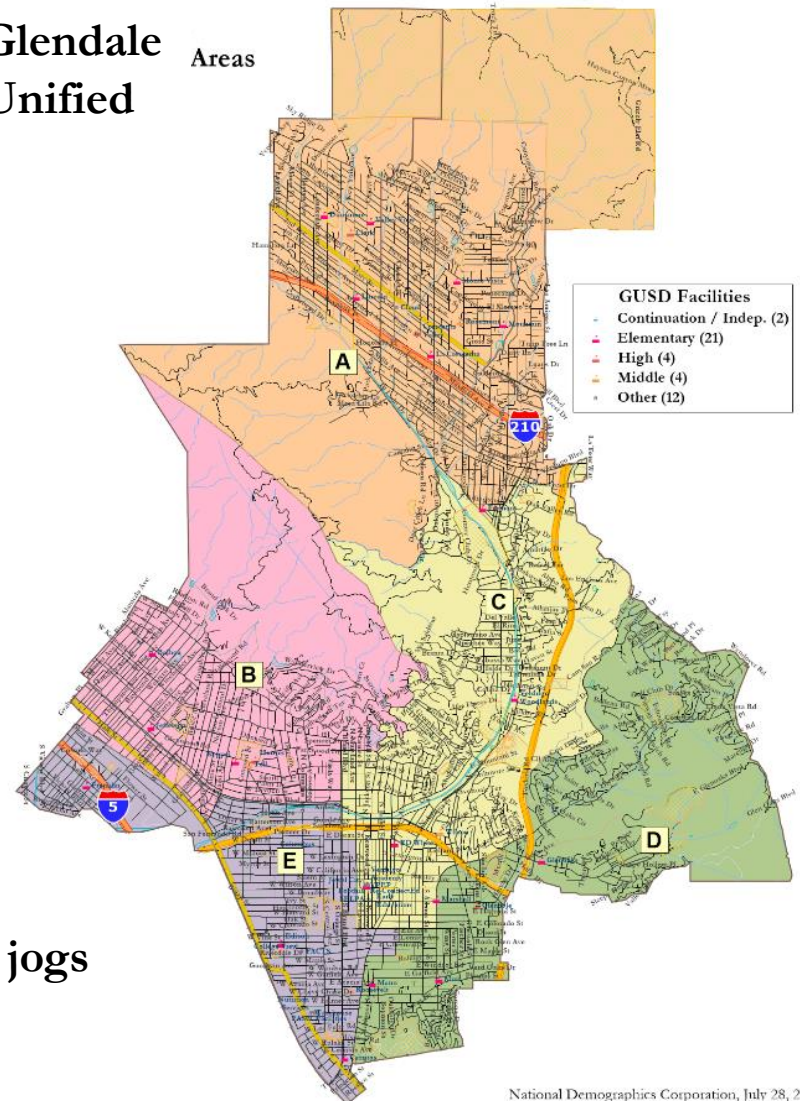
13

City of Compton
2012 Redistricting
Plan Adopted Oct. 23

Compton



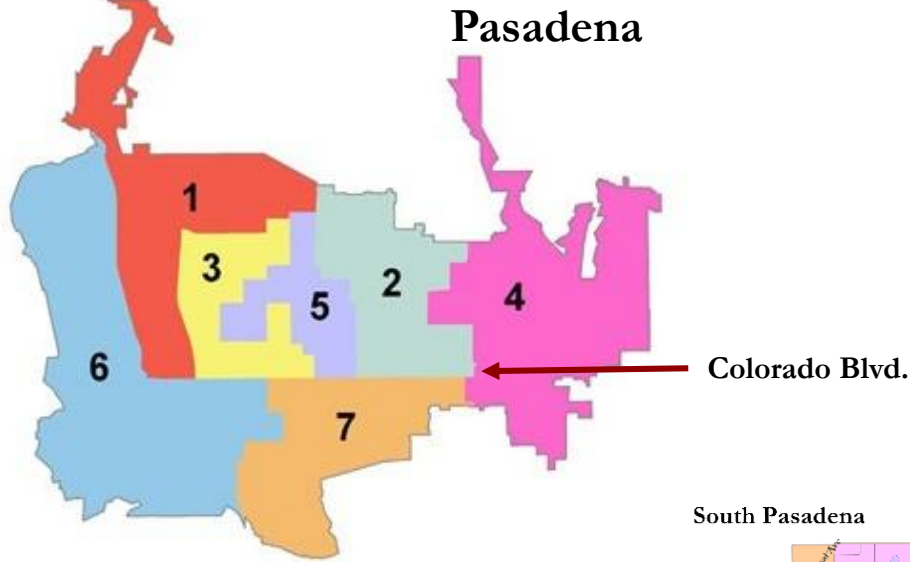
Glendale Unified Areas



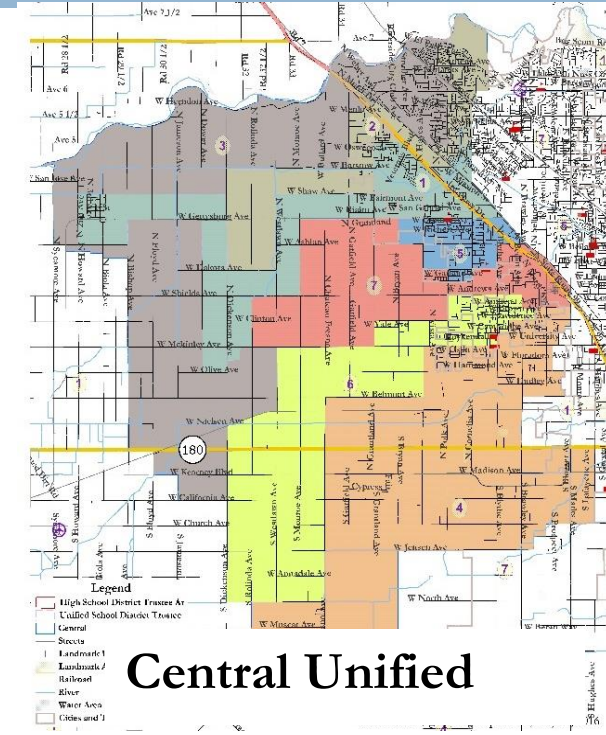
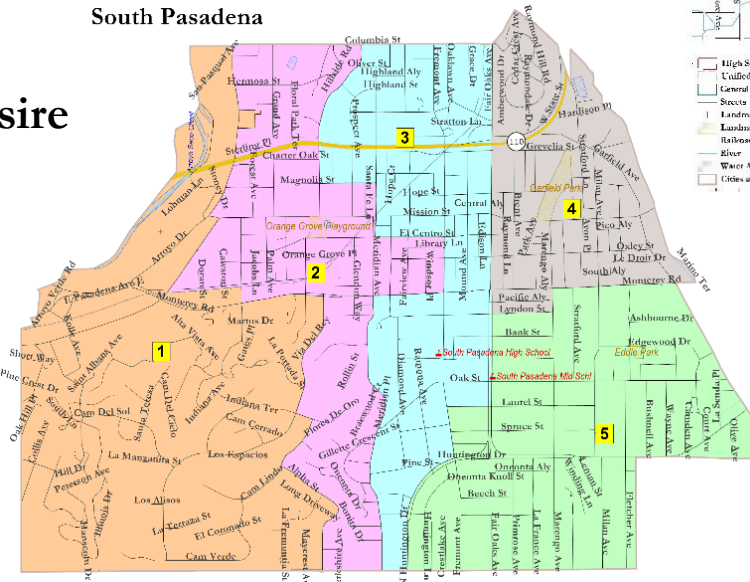
Examples of highly compact maps, with nooks and jogs driven only by equal population requirements.

Sample Multiple-Representative Maps

14



South Pasadena



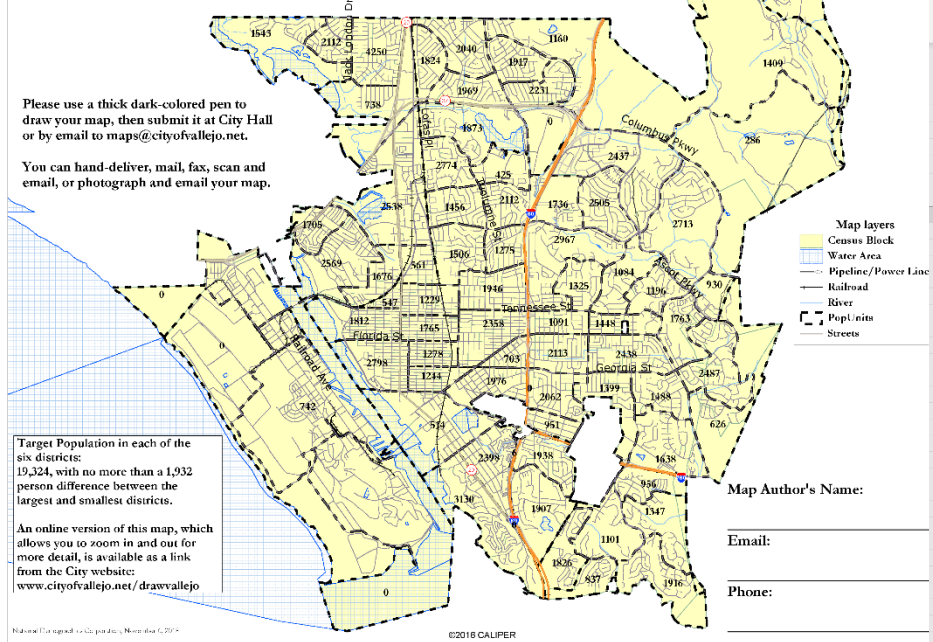
Central Unified

Examples of maps where a desire to have all members touch downtown (Pasadena) or rural areas (Central), or as many neighborhoods as possible (South Pas), led to policy-driven but non-compact maps.

Map-Drawing Tools

- Use the paper map, the online tool, or any other map
- Draw your neighborhood; draw the district you want for your area; or draw an entire citywide map

City of Vallejo 2018/2019 Districting Public Participation Kit



Target Population in each of the six districts: 19,324, with no more than a 1,932 person difference between the largest and smallest districts.

An online version of this map, which allows you to zoom in and out for more detail, is available as a link from the City website: www.cityofvallejo.net/drawvallejo

		Quick Reference: Total Population & Deviation from Ideal by district																	
		D1:	D2:		D3:		D4:		D5:		D6:								
		0	-19,324	0	-19,324	0	-19,324	0	-19,324	0	-19,324	0	-19,324						
		Total Population						Citizen Voting Age Population						Nov. 2016 Registration			Nov. 2016 Voters		
District (1-6)	Pop Unit	Tot. Pop.	Hisp	NH	Blk	NH Asn	tot	Hisp	NH	Blk	Asn	tot	latino	asn	filipino	tot	latino	asn	filipino
1	1	1,322	88	497	129	569	1,240	105	435	25	535	816	179	41	99	658	135	31	76
2	2	2,112	428	181	289	1,127	1,265	352	117	141	631	1,036	375	25	127	685	241	17	81
3	3	2,040	769	240	519	430	1,155	325	115	310	280	991	351	22	106	612	227	15	68
4	4	1,543	331	164	218	754	1,078	368	163	134	413	762	278	19	101	510	110	13	64
5	5	1,160	199	75	369	450	915	45	65	405	340	647	176	19	54	438	119	14	37
6	6	4,250	1,669	593	537	1,298	2,093	580	520	230	739	1,799	653	44	228	1,196	422	30	145
7	7	1,824	736	152	492	368	1,314	265	260	380	185	902	322	20	96	584	206	13	62
8	8	1,917	547	131	801	365	1,399	260	110	630	395	1,024	278	30	85	693	189	22	58
9	9	1,409	147	400	174	640	1,199	125	414	162	486	1,022	227	54	127	819	171	41	96
10	10	2,231	632	142	888	496	1,490	410	105	490	430	1,113	310	33	95	773	211	25	65
11	11	1,969	520	125	482	747	1,175	389	160	250	385	1,027	298	28	90	688	199	21	61
12	12	738	227	225	127	140	610	60	220	215	115	484	168	12	60	323	109	8	38
13	13	1,873	439	224	811	300	1,389	255	295	609	220	983	240	15	72	645	161	9	16
14	14	0	0	0	0	0	0	0	0	0	0	0	0	0	0	0	0	0	0
15	15	286	20	71	33	152	225	15	66	33	98	148	33	8	18	119	25	6	14
16	16	2,771	556	504	778	804	1,859	198	670	618	316	1,211	295	18	89	791	198	11	56
17	17	2,437	263	199	300	1,562	1,758	150	325	250	1,009	1,588	428	108	291	1,158	302	78	203
18	18	425	79	192	72	73	418	57	235	101	24	199	41	3	11	142	28	2	8
19	19	2,538	632	610	601	609	1,715	315	435	305	595	1,156	249	19	72	787	166	11	47
20	20	2,112	482	696	429	428	1,520	175	495	545	255	1,333	266	24	68	966	179	17	48
21	21	1,736	211	248	461	735	1,235	130	300	340	465	745	155	20	70	530	108	13	47
22	22	2,505	215	415	455	1,349	1,785	330	205	135	1,090	1,480	400	80	277	1,057	276	58	192
23	23	1,156	327	637	216	176	1,079	150	695	150	64	864	167	15	41	617	111	10	31
24	24	2,713	230	545	445	1,373	2,335	160	425	465	1,255	1,558	399	115	239	1,157	285	81	172
25	25	1,705	256	351	370	642	1,138	92	351	297	358	774	132	16	38	538	87	13	29
26	26	1,275	265	707	144	112	1,066	272	530	136	87	569	94	9	11	412	69	6	8
27	27	1,506	271	840	193	140	1,222	183	610	259	158	987	188	17	42	702	124	11	27
28	28	2,967	505	775	680	871	2,644	380	585	655	755	1,772	386	51	193	1,258	267	35	130
29	29	2,569	484	793	820	339	2,129	233	949	663	216	1,433	249	28	66	983	161	22	48

Using the One-Page Paper Map

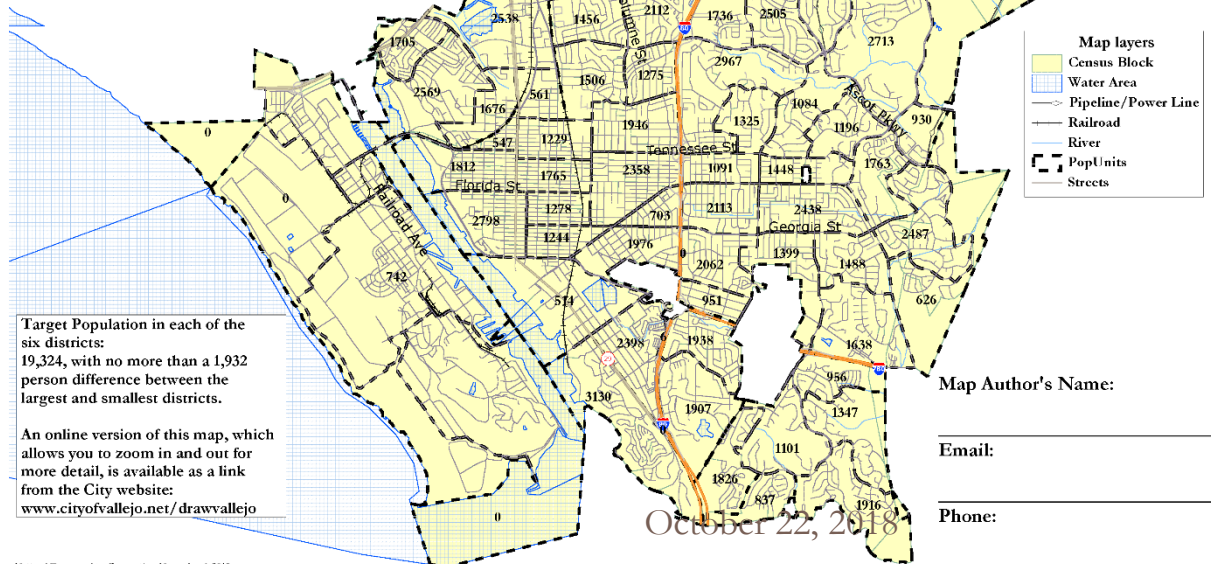
Draw your proposed districts, add up the numbers to be sure they are balanced, and send it in.

If you want to divide a Population Unit, simply note which Unit and the street where you want it divided and we will make that division if possible (divisions must be along Census Block lines, which usually follow streets).

City of Vallejo 2018/2019 Districting Public Participation Kit

Please use a thick dark-colored pen to draw your map, then submit it at City Hall or by email to maps@cityofvallejo.net.

You can hand-deliver, mail, fax, scan and email, or photograph and email your map.

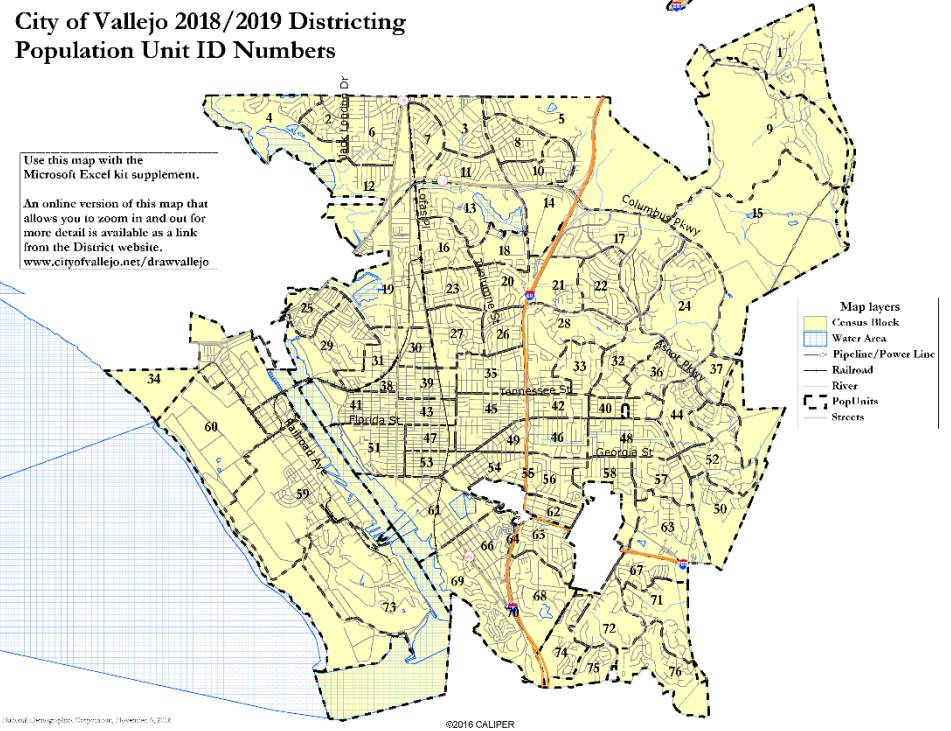




Using the Excel tool

A	B	C	D	E	F	G	H	I	J	K	L	M	N	O	P	Q	R	S		
Quick Reference: Total Population & Deviation from Ideal by district																				
D1:	0	-19,324	D2:	0	-19,324	D3:	0	-19,324	D4:	0	-19,324	D5:	0	-19,324	D6:	0	-19,324			
District (1-6)		Total Population			Citizen Voting Age Population			Nov. 2016 Registration			Nov. 2016 Voters									
	Tot. Pop.	Hisp	Wht	NH	NH	Ass	tot	Hisp	Wht	NH	NH	Ass	tot	Latino	Ass	Filipino	tot	Latino	Ass	F
1	1,322	88	497	129	569	1,240	105	435	25	535	816	179	41	99	658	135	31			
2	2,112	428	181	289	1,127	1,265	352	117	141	631	1,036	375	25	127	685	241	17			
3	2,040	769	240	519	430	1,455	325	415	310	280	991	354	22	106	642	227	15			
4	1,543	331	164	218	754	1,078	368	163	134	413	762	278	19	101	510	180	13			
5	1,660	199	75	369	450	915	45	65	405	340	647	176	19	51	438	119	14			
6	4,224	1,669	593	537	1,298	2,093	580	520	230	739	1,799	653	44	228	1,196	422	30			
7	1,824	736	152	492	368	1,314	265	260	380	185	902	322	20	96	584	206	13			
8	1,917	547	131	801	365	1,399	260	110	630	395	1,024	278	30	85	693	189	22			
9	1,409	78	400	174	640	1,199	125	414	162	486	1,022	227	54	127	819	171	41			
10	2,231	632	142	888	496	1,490	440	105	490	430	1,143	310	33	95	773	211	25			
11	1,969	520	125	482													21			
12	738	227	225	127													8			
13	1,873	439	22	841													9			
14	0	0	0	0													0			
15	286	20	71	33													6			
16	2,774	556	504	788													11			
17	2,137	263	199	300													78			
18	425	79	192	72													2			
19	2,538	632	610	601													11			
20	2,112	482	696	429													17			
21	1,736	211	248	461													13			
22	2,505	215	415	455													58			
23	1,456	327	637	216													10			
24	2,713	230	545	445	1,373	2,335	160	425	465	1,255	1,558	399	115	239	1,157	285	81			
25	1,705	256	351	370	642	1,138	92	351	297	358	774	132	16	38	538	87	13			
26	1,275	265	707	144	112	1,066	272	530	136	87	569	94	9	11	442	69	6			
27	1,506	271	840	193	140	1,222	183	610	259	158	987	188	17	42	702	124	11			
28	2,967	505	775	680	871	2,644	380	585	655	755	1,772	386	51	193	1,258	267	35			
29	2,569	484	793	820	339	2,129	233	949	663	216	1,433	249	28	66	983	161	22			
Instructions		Assignments			6-district balance															

Enter the district assignment in the highlighted column, and Excel will calculate the resulting demographic changes.



A	B	C	D	E	F	G	H	I	J	K	L	M	N		
Sums by District Assigned													Ideal population:		19,324
Vallejo 2018/2019 Public Participation Kit															
enter your name here															
Group															
Category															
1 2 3 4 5 6 Unassigned Total															
1 2 3 4															
Percentage															
Total Population															
Total Pop.															
Deviation from Ideal															
Hispanic															
NH White															
NH Black															
NH Asian															
Total CVAP															
Citizen Voting Age															
Hispanic															
NH White															
NH Black															
NH Asian															
Total Reg															
Nov. 2016 Registration															
Latino															
Asian American															
Filipino															
Total Voters															
Nov. 2016 Voters															
Latino															
Asian American															
Filipino															
Submitter's Comments about the plan:															
Check this map makes sense because...															
Instructions Assignments 6-district balance															

Public Input

1. What are the boundaries of your neighborhood or “community of interest”?
2. Do you want your neighborhood united in one district, or with multiple Councilmembers elected from it?
3. What other “communities of interest” do you see in the City?

Public Participation Tools

www.CityofVallejo.net/drawvallejo

[Interactive Review Website](#)

