

APPENDIX C
VMT Lighting Plan

MY PROJECT
 Name: Vallejo Marine Terminal
 Location: Vallejo, CA

EQUIPMENT LAYOUT
INCLUDES:
 Terminal
Electrical System Requirements: Refer to Amperage Draw Chart and/or the "Musco Control System Summary" for electrical sizing.
Installation Requirements: Results assume +/- 3% nominal voltage at line side of the ballast and structures located within 3 feet (1m) of design locations.

EQUIPMENT LIST FOR AREAS SHOWN

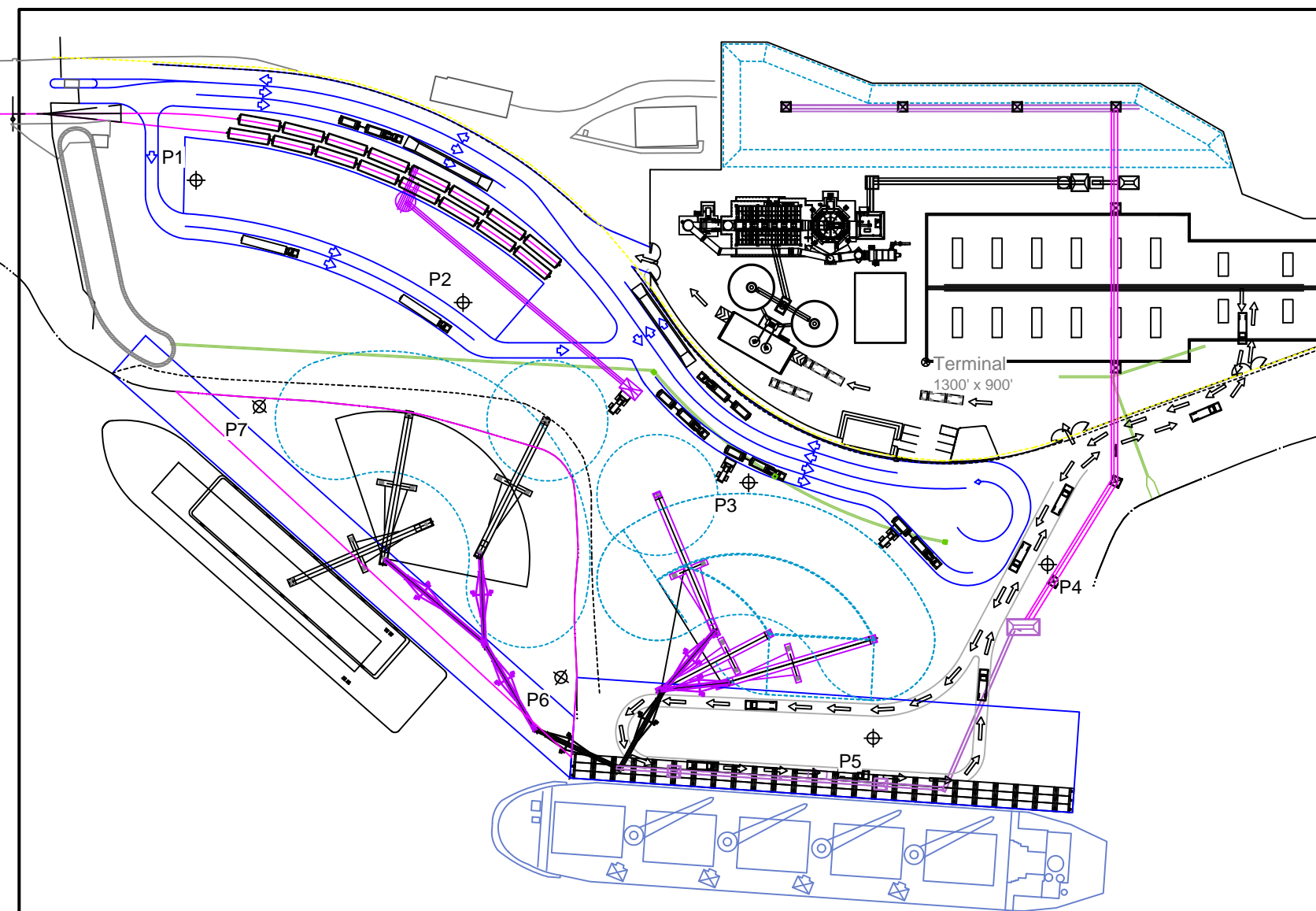
QTY	Pole			Luminaires		QTY / POLE
	LOCATION	SIZE	GRADE ELEVATION	MOUNTING HEIGHT	LAMP TYPE	
4	P1-P2 P5-P6	70'	-	70'	Line-Up LED 5700K	12
3	P3-P4, P7	70'	-	70'	Line-Up LED 5700K	9
1	P8	80'	-	80'	Line-Up LED 5700K	3
8	TOTALS					78

SINGLE LUMINAIRE AMPERAGE DRAW CHART

Ballast Specifications (.90 min power factor)	Line Amperage Per Luminaire (max draw)					
	208 (60)	220 (60)	240 (60)	277 (60)	347 (60)	480 (60)
Single Phase Voltage						
Other	-	-	-	-	-	-

ENGINEERED DESIGN
 By: W.VICE
 File # / Date: 168850A 29-Aug-14

Not to be reproduced in whole or part without the written consent of Musco Sports Lighting, LLC. ©1981, 2014 Musco Sports Lighting, LLC.



SCALE IN FEET 1 : 150
 0' 150' 300'

Pole location(s) ⊕ dimensions are relative to 0,0 reference point(s) ⊗

EQUIPMENT LIST FOR AREAS SHOWN

Pole				Luminaires				
QTY	LOCATION	SIZE	GRADE ELEVATION	MOUNTING HEIGHT	LAMP TYPE	QTY / POLE	THIS GRID	OTHER GRIDS
4	P1-P2 P5-P6	70'	-	70'	Line-Up LED 5700K	12	12	0
3	P3-P4, P7	70'	-	70'	Line-Up LED 5700K	9	9	0
1	P8	80'	-	80'	Line-Up LED 5700K	3	3	0
8	TOTALS					78	78	0



MY PROJECT

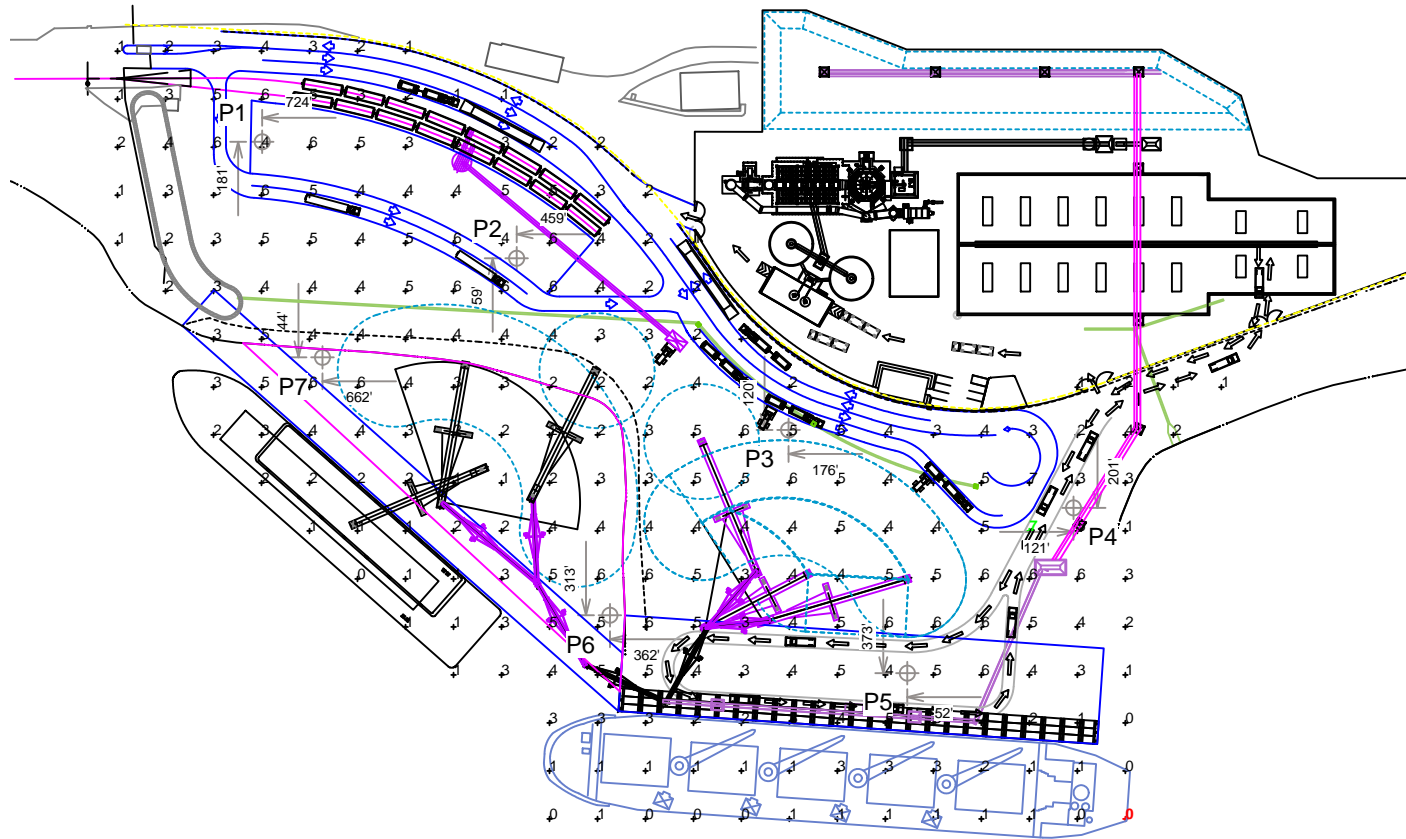
Name: Vallejo Marine Terminal
Location: Vallejo, CA

GRID SUMMARY

Name: Terminal
Size: 1300' x 900'
Spacing: 50.0' x 50.0'
Height: 3.0' above grade

CONSTANT ILLUMINATION

SUMMARY	HORIZONTAL FOOTCANDLES
	Entire Grid
Scan Average:	3.28
Maximum:	7
Minimum:	0
Avg / Min:	36.03
Max / Min:	75.52
UG (adjacent pts):	5.16
No. of Points:	238
LUMINAIRE INFORMATION	
Luminaire Type:	LED - SSL
Rated Lamp Life:	100,000 hours
Design Lumens:	28,467
Avg Lamp Tilt Factor:	1.000
No. of Luminaires:	78
Avg KW:	27.69 (30.73 max)



Guaranteed Performance: The CONSTANT ILLUMINATION described above is guaranteed for the rated life of the lamp.

Field Measurements: Illumination measured in accordance with IESNA LM-5-04 and CIBSE LG4. Individual values may vary. See the Warranty document for details.

Electrical System Requirements: Refer to Amperage Draw Chart and/or the "Musco Control System Summary" for electrical sizing.

Installation Requirements: Results assume +/- 3% nominal voltage at line side of the ballast and structures located within 3 feet (1m) of design locations.

ENGINEERED DESIGN

By: WVICE
File # / Date: 168850A 29-Aug-14

Not to be reproduced in whole or part without the written consent of Musco Sports Lighting, LLC. ©1981, 2014 Musco Sports Lighting, LLC.

SCALE IN FEET 1 : 200



Pole location(s) ⊕ dimensions are relative to 0,0 reference point(s) ⊗

EQUIPMENT LIST FOR AREAS SHOWN

Pole				Luminaires				
QTY	LOCATION	SIZE	GRADE ELEVATION	MOUNTING HEIGHT	LAMP TYPE	QTY / POLE	THIS GRID	OTHER GRIDS
4	P1-P2 P5-P6	70'	-	70'	Line-Up LED 5700K	12	12	0
3	P3-P4, P7	70'	-	70'	Line-Up LED 5700K	9	9	0
1	P8	80'	-	80'	Line-Up LED 5700K	3	3	0
8	TOTALS					78	78	0



MY PROJECT

Name: Vallejo Marine Terminal
Location: Vallejo, CA

GRID SUMMARY

Name: Drive
Size: 1300' x 900'
Spacing: 10.0' x 10.0'
Height: 3.0' above grade

CONSTANT ILLUMINATION

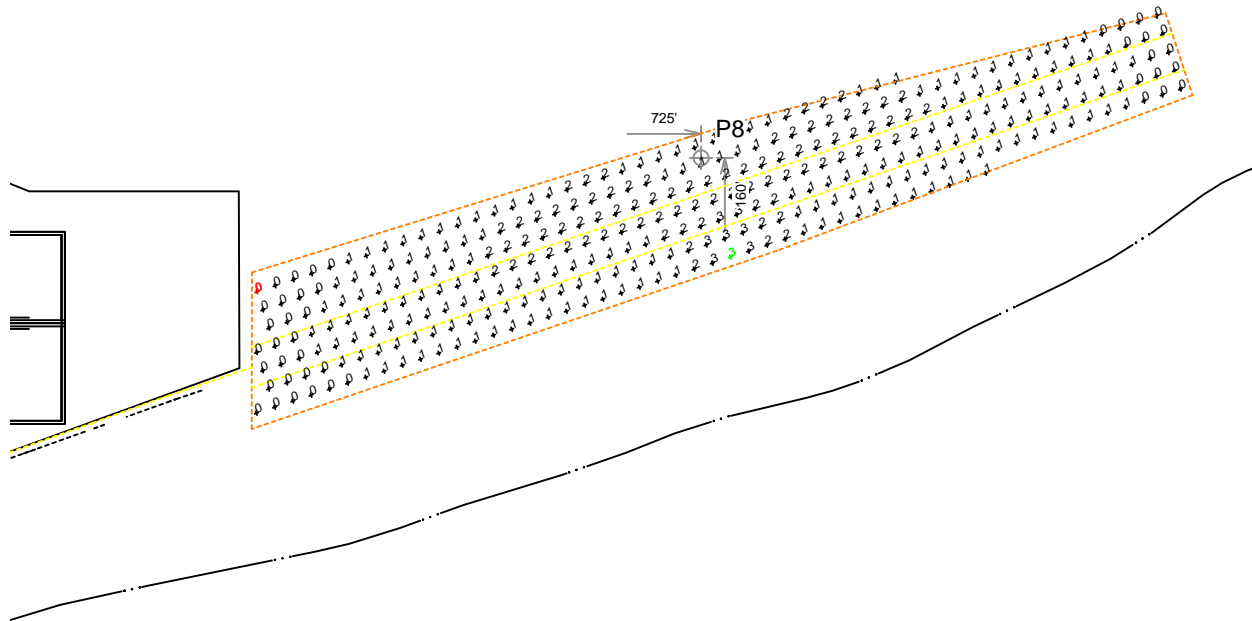
SUMMARY	HORIZONTAL FOOTCANDLES
	Entire Grid
Scan Average:	1.16
Maximum:	3
Minimum:	0
Avg / Min:	4.60
Max / Min:	12.27
UG (adjacent pts):	1.38
No. of Points:	330
LUMINAIRE INFORMATION	
Luminaire Type:	LED - SSL
Rated Lamp Life:	100,000 hours
Design Lumens:	28,467
Avg Lamp Tilt Factor:	1.000
No. of Luminaires:	78
Avg KW:	27.69 (30.73 max)

Guaranteed Performance: The CONSTANT ILLUMINATION described above is guaranteed for the rated life of the lamp.

Field Measurements: Illumination measured in accordance with IESNA LM-5-04 and CIBSE LG4. Individual values may vary. See the Warranty document for details.

Electrical System Requirements: Refer to Amperage Draw Chart and/or the "Musco Control System Summary" for electrical sizing.

Installation Requirements: Results assume +/- 3% nominal voltage at line side of the ballast and structures located within 3 feet (1m) of design locations.



SCALE IN FEET 1 : 100



Pole location(s) Ⓢ dimensions are relative to 0,0 reference point(s) ⊗

ENGINEERED DESIGN

By: W.VICE
File # / Date: 168850A 29-Aug-14

Not to be reproduced in whole or part without the written consent of Musco Sports Lighting, LLC. ©1981, 2014 Musco Sports Lighting, LLC.



MY PROJECT
 Name: Vallejo Marine Terminal
 Location: Vallejo, CA

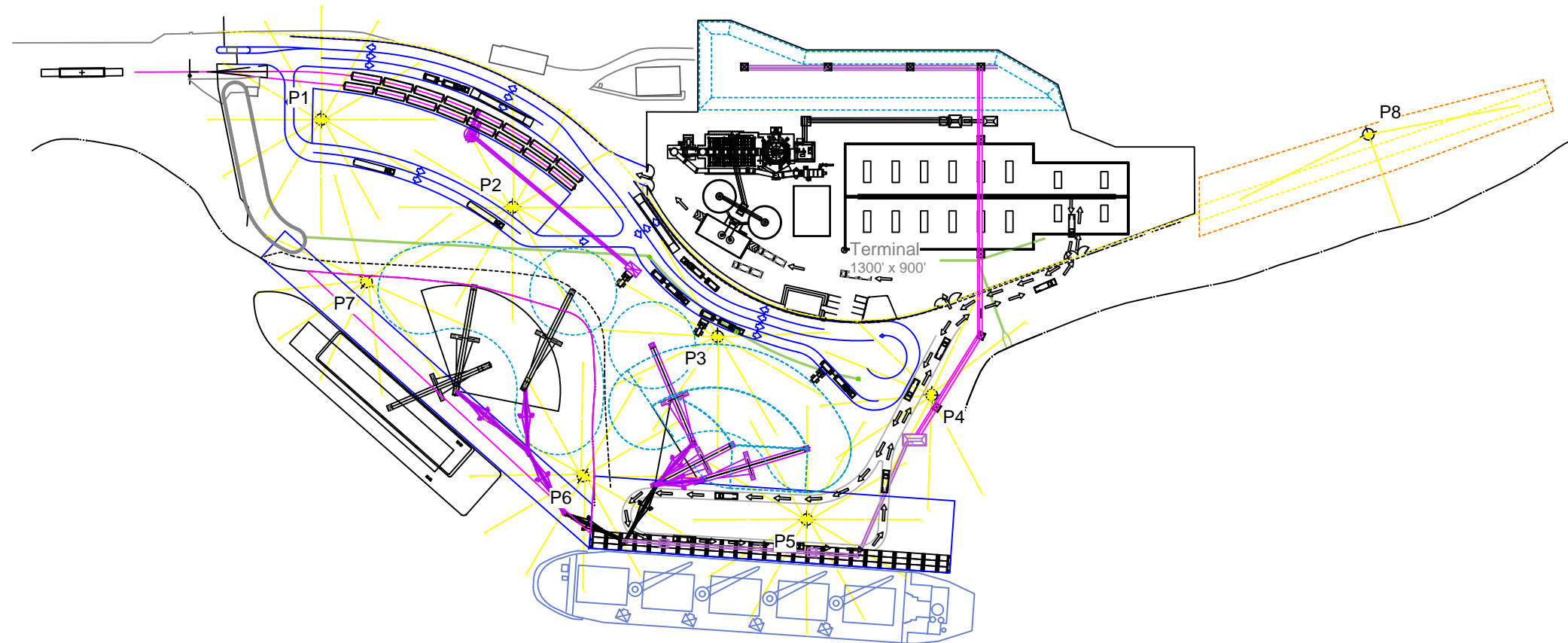
EQUIPMENT LAYOUT
INCLUDES:
 · Terminal
Electrical System Requirements: Refer to Amperage Draw Chart and/or the "Musco Control System Summary" for electrical sizing.
Installation Requirements: Results assume +/- 3% nominal voltage at line side of the ballast and structures located within 3 feet (1m) of design locations.

EQUIPMENT LIST FOR AREAS SHOWN

QTY	Pole			Luminaires		QTY / POLE
	LOCATION	SIZE	GRADE ELEVATION	MOUNTING HEIGHT	LAMP TYPE	
4	P1-P2 P5-P6	70'	-	70'	Line-Up LED 5700K	12
3	P3-P4, P7	70'	-	70'	Line-Up LED 5700K	9
1	P8	80'	-	80'	Line-Up LED 5700K	3
8	TOTALS					78

SINGLE LUMINAIRE AMPERAGE DRAW CHART

Ballast Specifications (.90 min power factor)	Line Amperage Per Luminaire (max draw)					
	208 (60)	220 (60)	240 (60)	277 (60)	347 (60)	480 (60)
Single Phase Voltage	-	-	-	-	-	-
Other	-	-	-	-	-	-



SCALE IN FEET 1 : 200
 0' 200' 400'

Pole location(s) ⊕ dimensions are relative to 0,0 reference point(s) ⊗

ENGINEERED DESIGN
 By: W.VICE
 File # / Date: 168850A 29-Aug-14

Not to be reproduced in whole or part without the written consent of Musco Sports Lighting, LLC. ©1981, 2014 Musco Sports Lighting, LLC.